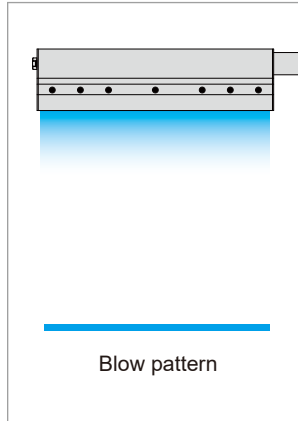




For blowers



- Slit nozzle produces even air flow with uniform impact distribution.
- Interior design minimizes pressure loss and maximizes blowing impact. Able to reduce energy consumption by 2/3 compared to compressed air nozzles.
- Long thin slit with tapered lip ideal for installation between rollers or in tight spaces.



Material
S304



Noise level
90 dBA at 20 kPa (for slit length of 800 mm)



Weight
1.9–7.4 kg

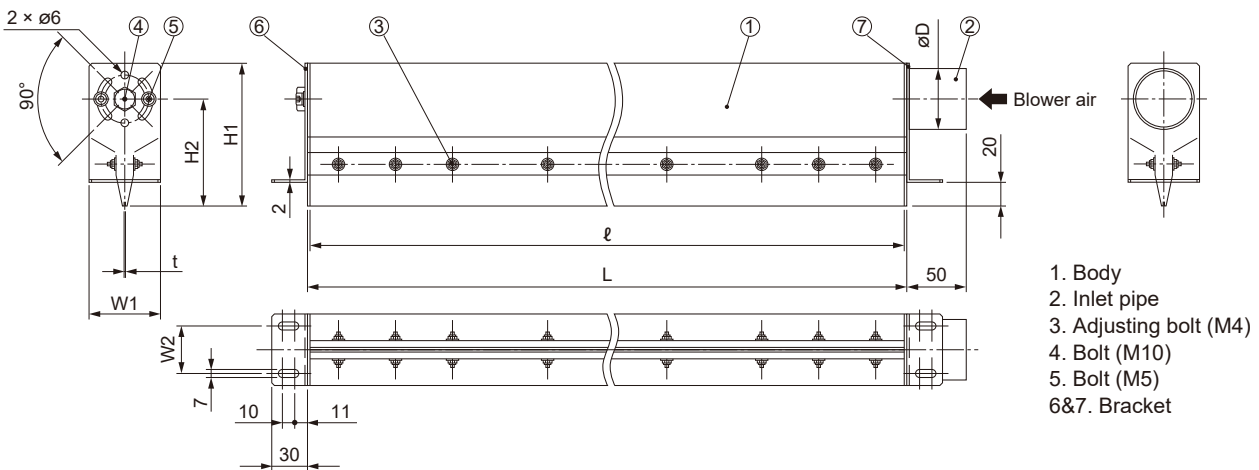


Air consumption (at 5 kPa)
0.97–2.91 m³/min [970–2,910 L/min], Normal for slit opening of 0.5 mm
1.91–5.73 m³/min [1,910–5,730 L/min], Normal for slit opening of 1.0 mm



Max. operating pressure
30 kPa (4 psi)
[30 kPa = 0.03 MPa]

Drawing



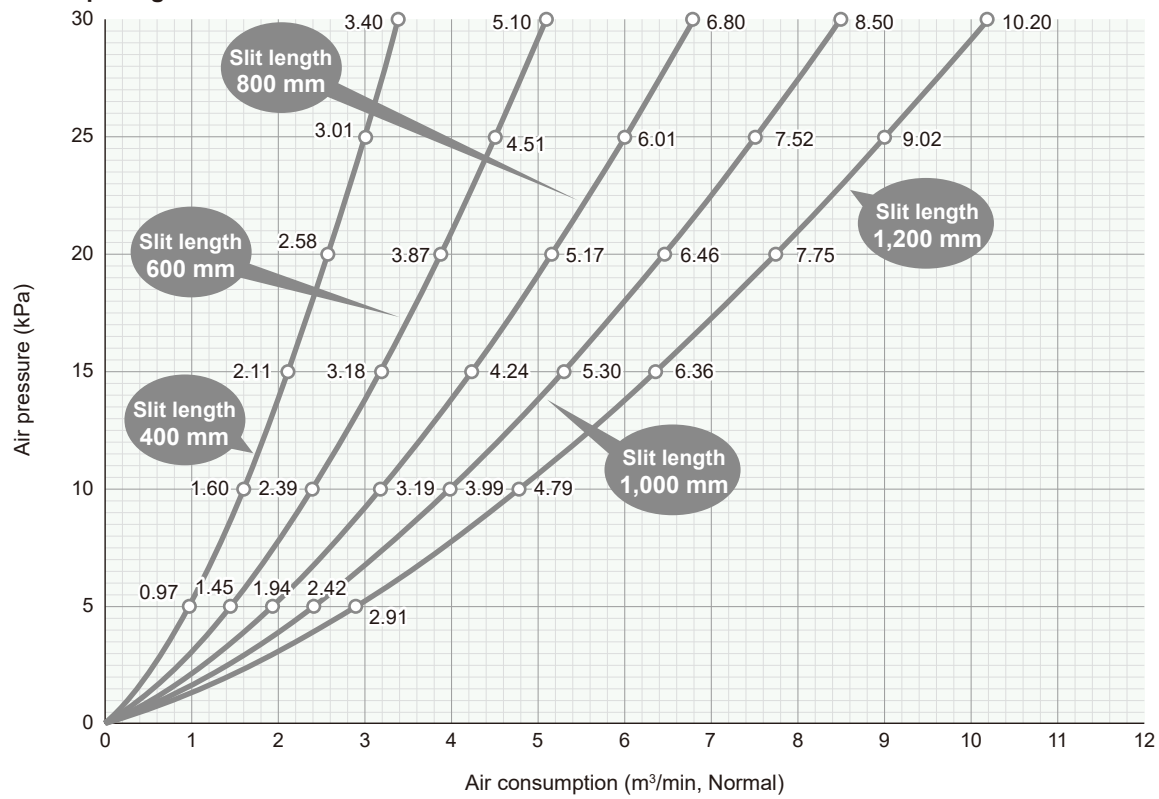
■ Dimensions and weight

Air inlet type	Slit length ℓ (mm)	Slit opening t (mm)	Outer dimensions (mm)						Weight (kg)
			L ¹	H1	H2	W1	W2	$\varnothing D$	
D38	400	0.5	404	105	80	80	30	38.0	1.9
	600		604						2.7
	800		804						3.5
	1,000		1,004						4.3
D50	1,200		1,204	120	90	60	40	50.8	5.9
D38	400	1.0	404	120	90	60	40	50.8	1.9
			604						3.2
			804						4.1
D65	1,000		1,004	140	102.5	75	50	63.5	6.2
	1,200	1,204	7.4						

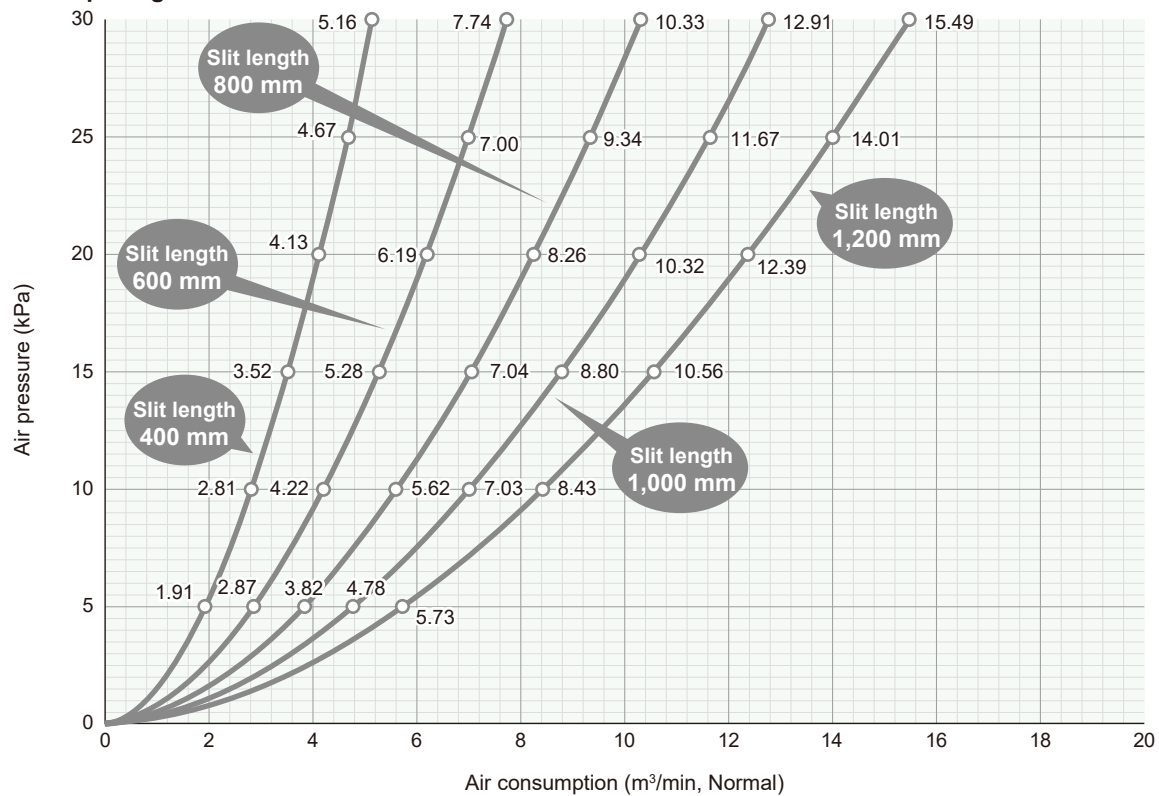
¹ Customizable total length from 250 mm to 1,950 mm.

Air Consumption

■ **Slit Opening: 0.5 mm**



■ **Slit Opening: 1.0 mm**



Blower air

Noise Level at a distance of 1,000 mm

Background noise: 35 dBA

■ **SLNB 800×0.5**

(Slit length: 800 mm, slit opening: 0.5 mm)

Pressure (kPa)	Noise level (dBA)
5	87
10	88
15	89
20	90

■ **SLNB 800×1.0**

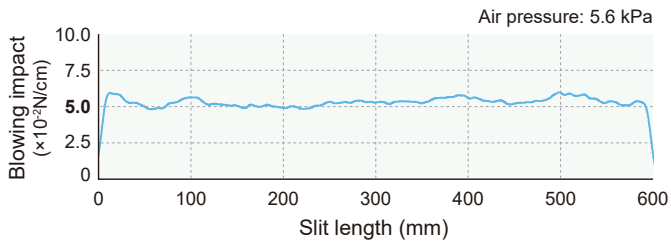
(Slit length: 800 mm, slit opening: 1.0 mm)

Pressure (kPa)	Noise level (dBA)
5	82
10	87
15	90
20	90

Blowing Impact Distribution at 5 mm below the nozzle orifice

■ **SLNB 600×0.5**

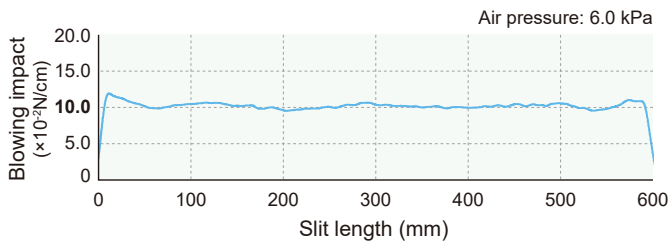
(Slit length: 600 mm, slit opening: 0.5 mm)



Deviation from median: +/-10.3%

■ **SLNB 600×1.0**

(Slit length: 600 mm, slit opening: 1.0 mm)



Deviation from median: +/-5.5%

HOW TO ORDER

Please inquire or order for a specific nozzle using this coding system. See Page 65.

<Example> D65 SLNB 1200×1.0 S304-S-A

D65 SLNB 1200 × 1.0 S304-S-A

Air Inlet Type

- D38
- D50
- D65

Slit Length

- 400
- 600
- 800
- 1000
- 1200

Slit Opening

- 0.5
- 1.0