

DDRP
series

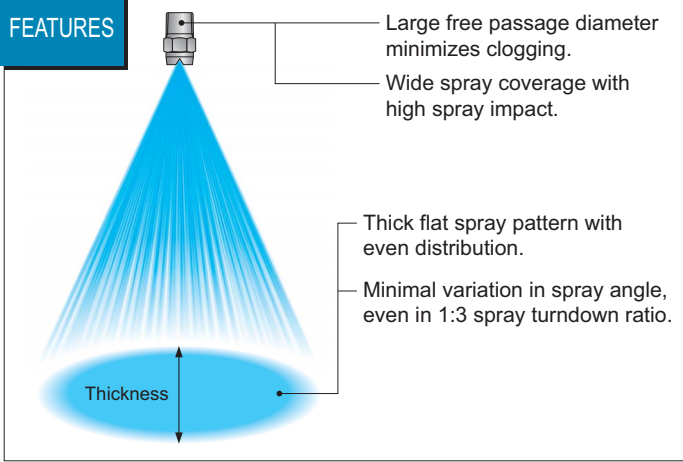
Ultra-Thick Flat Spray Nozzles with Even Distribution

Steel making/ Rolling mill/
Plate mill

- Cooling
- Cleaning after pickling



FEATURES



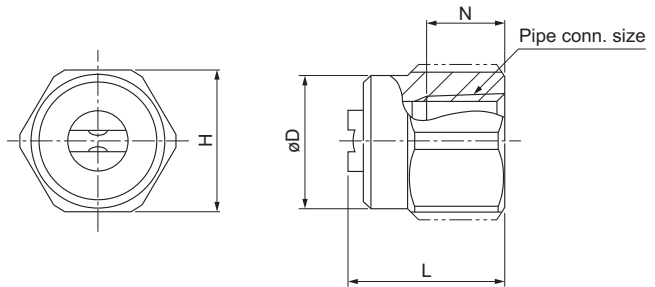
DDRP series

MATERIAL S303

STRUCTURE Simple one-piece structure to be screwed into a pipe, no whirler inside.

Pipe conn. size	Dimensions (mm)				Mass (g)
	L	H	øD	N	
Rc1/4	21	19	21	10.5	30
Rc3/8	26	21	23	11	40
Rc1/2	32	26	29	14	80
Rc3/4	40	32	35	15	140
Rc1	48	41	46	17	300

[Note] Appearance and dimensions may differ slightly depending on materials and nozzle codes.



Spray angle code	Width	Thick-ness	Spray capacity code	Pipe conn. size	Spray angle (°) in width			Spray angle (°) in thickness			Spray capacity (ℓ/min)								Mean drop. dia. (μm)	Free pass. dia. (mm)		
					0.1 MPa	0.3 MPa	1 MPa	0.1 MPa	0.3 MPa	1 MPa	0.05 MPa	0.1 MPa	0.15 MPa	0.2 MPa	0.3 MPa	0.5 MPa	0.7 MPa	1 MPa			1.5 MPa	2 MPa
115	60	50	Rc1/4	112	115	116	58	60	60	2.15	2.98	3.61	4.13	5.00	6.42	7.57	9.02	11.0	12.7	300	1.4	
				100	113	115	116	58	60	60	4.31	5.97	7.22	8.26	10.0	12.8	15.1	18.0	22.0	25.3	390	2.0
				120	113	115	116	58	60	60	5.17	7.16	8.66	9.92	12.0	15.4	18.2	21.6	26.4	30.4	390	2.2
		140	113	115	116	58	60	60	6.03	8.35	10.1	11.6	14.0	18.0	21.2	25.3	30.8	35.5	390	2.4		
		200	Rc3/8	113	115	116	58	60	60	8.62	11.9	14.4	16.5	20.0	25.7	30.3	36.1	44.0	50.7	430	2.9	
		260	Rc3/8	113	115	116	58	60	60	11.2	15.5	18.8	21.5	26.0	33.4	39.4	46.9	57.2	65.9	460	3.3	
	90	45	300	Rc1/2	113	115	116	59	60	60	12.9	17.9	21.7	24.8	30.0	38.5	45.4	54.1	66.0	76.0	480	3.5
				Rc3/4	113	115	116	59	60	60	21.5	29.8	36.1	41.3	50.0	64.2	75.7	90.2	110	127	550	4.5
				Rc1	113	115	116	59	60	60	34.5	47.7	57.8	66.1	80.0	103	121	144	176	203	630	5.8
			1000	Rc1	113	115	116	59	60	60	43.1	59.7	72.2	82.6	100	128	151	180	220	253	670	6.5
			50	Rc1/4	88	90	90	42	45	45	2.15	2.98	3.61	4.13	5.00	6.42	7.57	9.02	11.0	12.7	310	1.4
			100	Rc1/4	89	90	90	42	45	45	4.31	5.97	7.22	8.26	10.0	12.8	15.1	18.0	22.0	25.3	310	2.1
120	Rc1/4	89	90	90	43	45	45	5.17	7.16	8.66	9.92	12.0	15.4	18.2	21.6	26.4	30.4	410	2.3			
140	Rc1/4	89	90	90	43	45	45	6.03	8.35	10.1	11.6	14.0	18.0	21.2	25.3	30.8	35.5	410	2.5			
200	Rc3/8	89	90	90	43	45	45	8.62	11.9	14.4	16.5	20.0	25.7	30.3	36.1	44.0	50.7	460	2.9			
260	Rc3/8	89	90	90	43	45	45	11.2	15.5	18.8	21.5	26.0	33.4	39.4	46.9	57.2	65.9	490	3.4			
300	Rc1/2	89	90	91	43	45	45	12.9	17.9	21.7	24.8	30.0	38.5	45.4	54.1	66.0	76.0	510	3.7			
500	Rc3/4	89	90	91	43	45	45	21.5	29.8	36.1	41.3	50.0	64.2	75.7	90.2	110	127	580	4.7			
800	Rc1	89	90	91	43	45	45	34.5	47.7	57.8	66.1	80.0	103	121	144	176	203	660	5.9			
1000	Rc1	89	90	91	43	45	45	43.1	59.7	72.2	82.6	100	128	151	180	220	253	700	6.3			

Conversion of unit [Pressure] 0.1 MPa ≈ 14.50 psi [Flow rate] 1 ℓ (liter) ≈ 0.26 US gal.
10 psi ≈ 0.07 MPa 1 US gal. ≈ 3.79 ℓ (liter)

How to order

Please inquire or order for a specific nozzle using this coding system.

**M" indicates male thread (R) and "F" indicates female thread (Rc).
To order, please specify the pipe connection size by replacing respectively "R" and "Rc" by "M" and "F" as in the above chart.

<Example> 1/4F DDRP 115 60 50 S303

