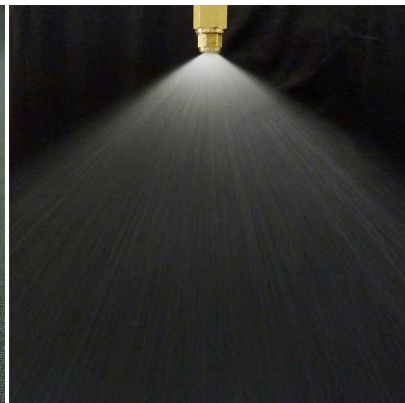


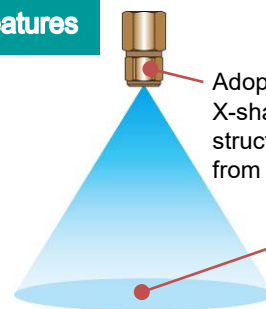


JJX
series

3-piece Structure Standard Full Cone Spray Nozzles



Features



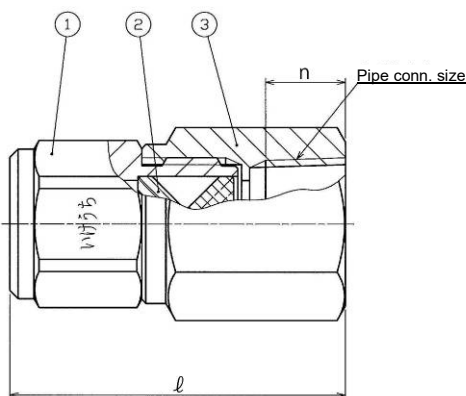
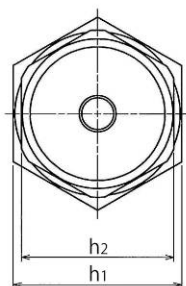
Adopts minimal clogging X-shaped whirler. Three-piece structure prevents the whirler from dropping off.

Full cone spray pattern with a round impact area and uniform distribution.

【Applications】 Continuous casted steel cooling

Dimensions

■ Material: B (Brass)



- ① Nozzle body
- ② Whirler
- ③ Adaptor

| Pipe conn. size | Outer dimensions (mm) | | | | Mass (g) |
|-----------------|-----------------------|----------------|----------------|----|----------|
| | ℓ | h ₁ | h ₂ | n | |
| 1/4F | 35 | 17 | 16 | 10 | 49 |
| 3/8x1/4F | 40 | 21 | 16 | 11 | 78 |
| 3/8F | 42 | 21 | 19 | 11 | 82 |

Note: “F” in pipe connection size denotes female thread.

Performance chart

| Spray angle code | Spray capacity code | Pipe conn. size | | Spray capacity at 0.5 MPa (L/min) |
|------------------|---------------------|-----------------|------|-----------------------------------|
| | | 1/4F | 3/8F | |
| 67 | 065 | ○ | ○* | 6.5 |
| | 080 | ○ | ○* | 8.0 |
| | 10 | ○ | ○* | 10.0 |
| | 12 | | ○ | 12.0 |
| | 15 | | ○ | 15.0 |
| | 20 | | ○ | 20.0 |
| 90 | 065 | ○ | ○* | 6.5 |
| | 080 | ○ | ○* | 8.0 |
| | 10 | ○ | ○* | 10.0 |
| | 12 | | ○ | 12.0 |
| | 15 | | ○ | 15.0 |
| | 20 | | ○ | 20.0 |
| 110 | 065 | ○ | ○* | 6.5 |
| | 080 | ○ | ○* | 8.0 |
| | 10 | ○ | ○* | 10.0 |
| | 12 | | ○ | 12.0 |
| | 15 | | ○ | 15.0 |
| | 20 | | ○ | 20.0 |

How to order

Please inquire or order for a specific nozzle using this coding system.

<Example> 3/8x1/4F JJX 6710 B

| Pipe conn. size | Series | Spray angle code | Spray capacity code | Material |
|-----------------|------------|------------------|---------------------|-------------|
| 3/8x1/4F | JJX | 67 | 10 | B |
| · 1/4F | | · 67 | · 065 | · B (Brass) |
| · 3/8x1/4F | | · 90 | ∫ | |
| · 3/8F | | · 110 | · 22 | |

“F” indicates female thread (“RC” of the ISO standard), e.g. 1/4F = Rc1/4.

*Pipe connection size code for 3/8F is indicated as “3/8x1/4F” when spray capacity code is 065, 080, or 10.

For any inquiry please feel free to contact our sales office or the overseas division at overseas@kirinoikeuchi.co.jp.



“The Fog Engineers”

H. IKEUCHI & CO., LTD.

Headquarters

Daiichi Kyogyo Bldg., 1-15-15, Awaza, Nishi-ku, Osaka 550-0011, Japan
Tel: 81-6-6538-4015 Fax: 81-6-6538-4022
Email: overseas@kirinoikeuchi.co.jp

We have our branches and affiliate companies around the world—in China, USA, The Netherlands, Turkey, Thailand, Indonesia, UAE, and more. Please see our website for the nearest contact.

<https://www.kirinoikeuchi.co.jp/eng/company/location/>