

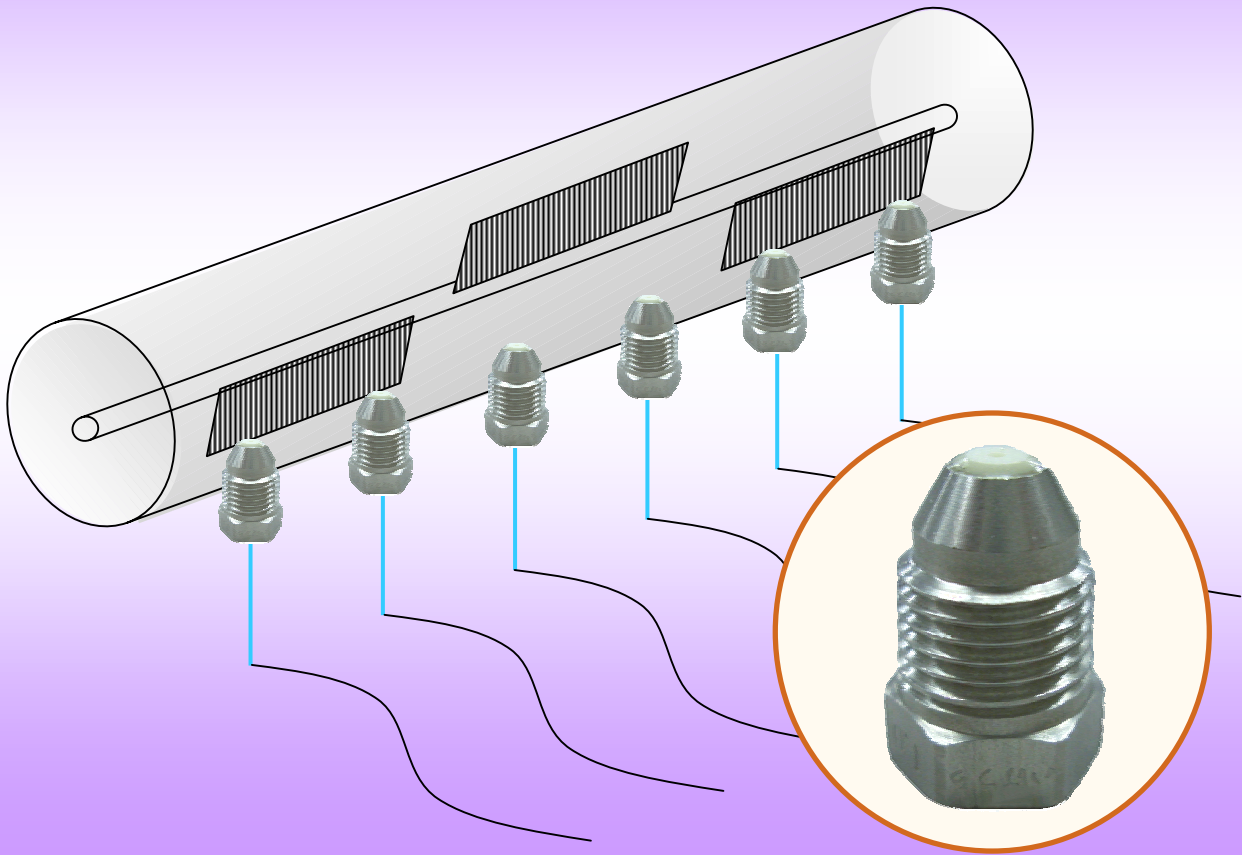
NEW

NO.CRP-AL070920E

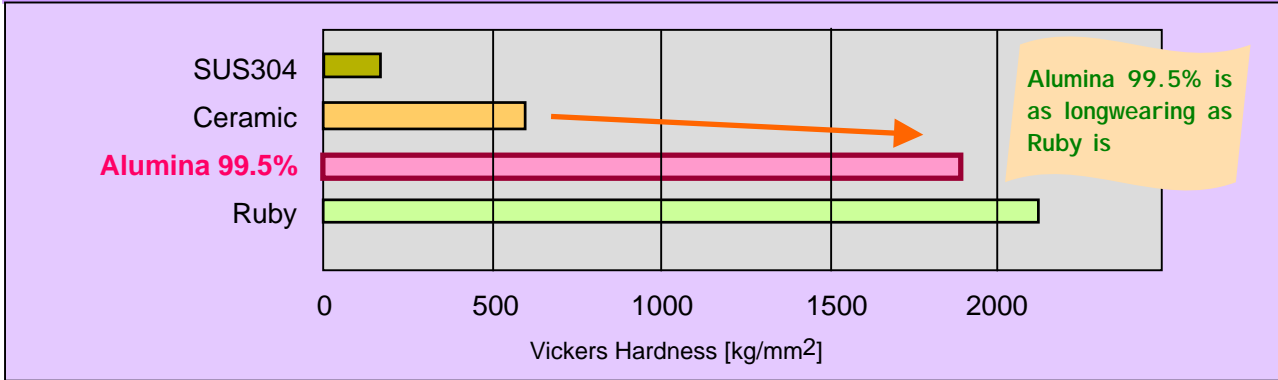
Get the hardness of Ruby at affordable cost!

CRP-AL99 series

Convex Round Inlet Solid Stream Jet with 99.5% Alumina Ceramic Tip

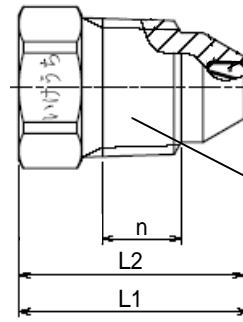
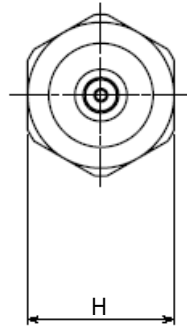


Comparison of the Hardness



Alumina 99.5% is as longwearing as Ruby is

Structure



[Material]

Ceramic orifice:
AL₂O₃ 99.5%

Adhesive:
Araldite®

Body:
Stainless steel 303

Dimensions

Series	Pipe Conn. Size	Dimensions [mm]				Mass [g]
		L1	L2	H	n	
CRP-(AL99)	1/8	18	17.5	12	6	7.0
	1/4	22	21.5	14	7.5	15.0

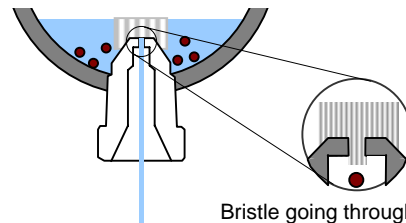
[Note] Appearance and dimensions may be slightly changed depending on materials and nozzle codes.

Application

Cleaning: Wire and felt parts of paper making machines, machinery, parts, vehicles, returnable containers, bottle, etc

Feature

- Convex round inlet for minimal clogging of the nozzle
- 99.5% High-Alumina ceramic tip providing hardness for stable performance with longer life
- Short water path enabling brush bristle going through for better cleanability.



Bristle going through

Chart

Orifice Diameter Code	CRP-(AL99)		Spray Capacity [L/min]					
	1/8M	1/4M	0.3 MPa	0.5 MPa	0.7 MPa	1 MPa	2 MPa	3 MPa
0.5			0.20	0.26	0.31	0.37	0.52	0.63
0.6			0.29	0.37	0.44	0.53	0.74	0.91
0.7			0.39	0.51	0.60	0.72	1.01	1.24
0.8			0.51	0.66	0.78	0.94	1.32	1.62
0.9			0.65	0.84	0.99	1.18	1.67	2.05
1.0			0.80	1.03	1.22	1.46	2.07	2.53
1.1			0.97	1.25	1.48	1.77	2.50	3.06
1.2			1.15	1.49	1.76	2.10	2.98	3.64
1.3			1.35	1.75	2.07	2.47	3.49	4.28
1.4			1.57	2.02	2.40	2.86	4.05	4.96
1.5			1.80	2.32	2.75	3.29	4.65	5.69
1.7			2.31	2.99	3.53	4.22	5.97	7.31
2.0			3.20	4.13	4.89	5.84	8.26	10.1



How to order

Please inquire or order for a specific nozzle on this coding system.

<Example> **1/8MCRP 0.5S303(AL99)**

1/8M	CRP	0.5	S303	(AL99)
Pipe Conn. Size	Series	Orifice Dia. Code	Material	Orifice Material
1/8M	CRP	0.5	S303	(AL99)
1/4M		~		
		2.0		



"The Mist Engineers"
H. IKEUCHI & CO., LTD.

Overseas Division: Daiichi Kyogyo Bldg., 1-15-15, Awaza, Nishi-ku, Osaka 550-0011 Japan

Tel: +81-6-6538-4015 Fax: +81-6-6538-4022

E-mail: overseas@kirinoikeuchi.co.jp URL: <http://www.kirinoikeuchi.co.jp/eng/>